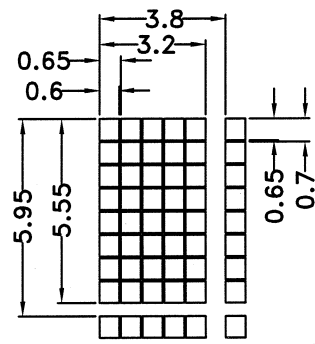
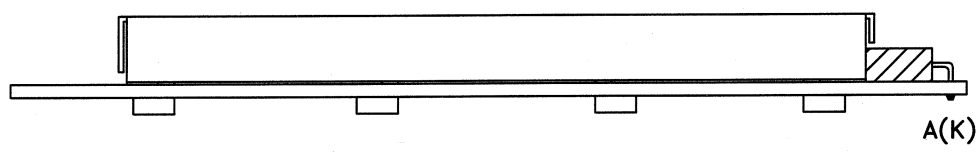
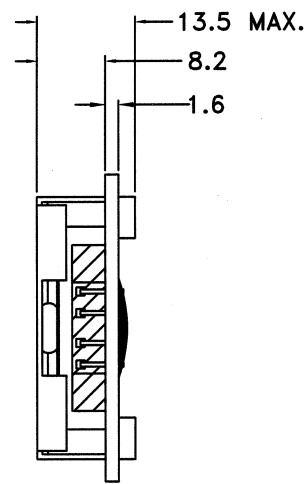
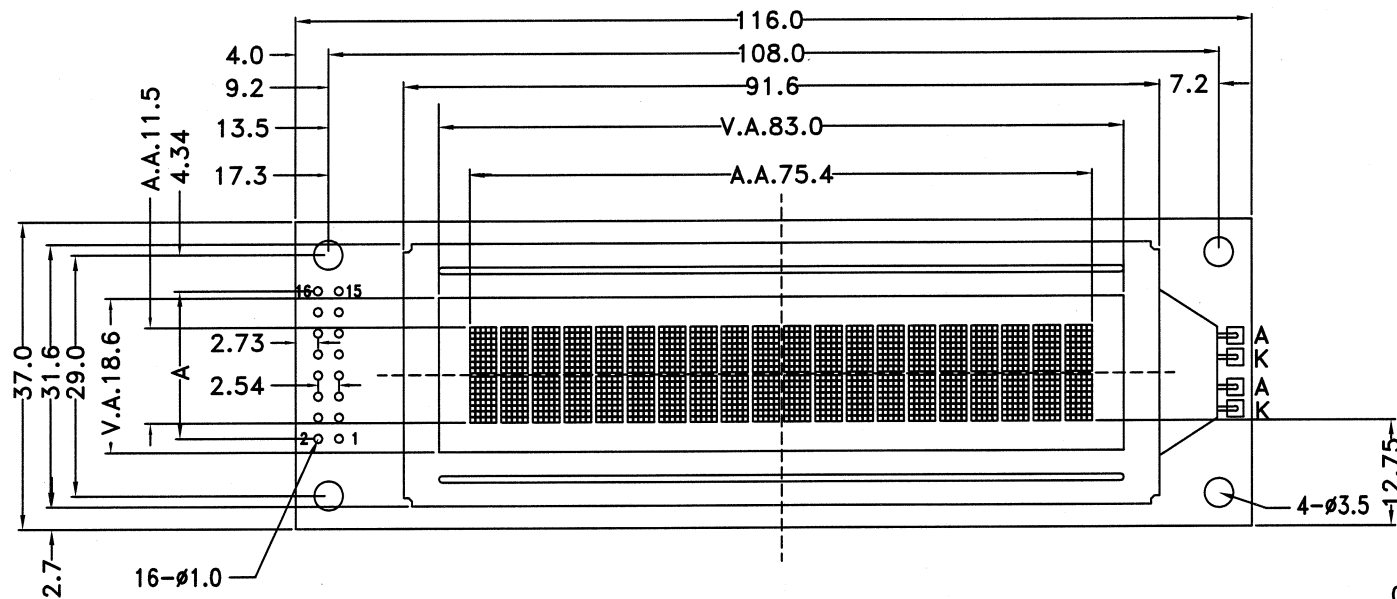
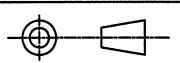


MARK	REASON	PREPARED	DATE
△			
△			
△			
△			



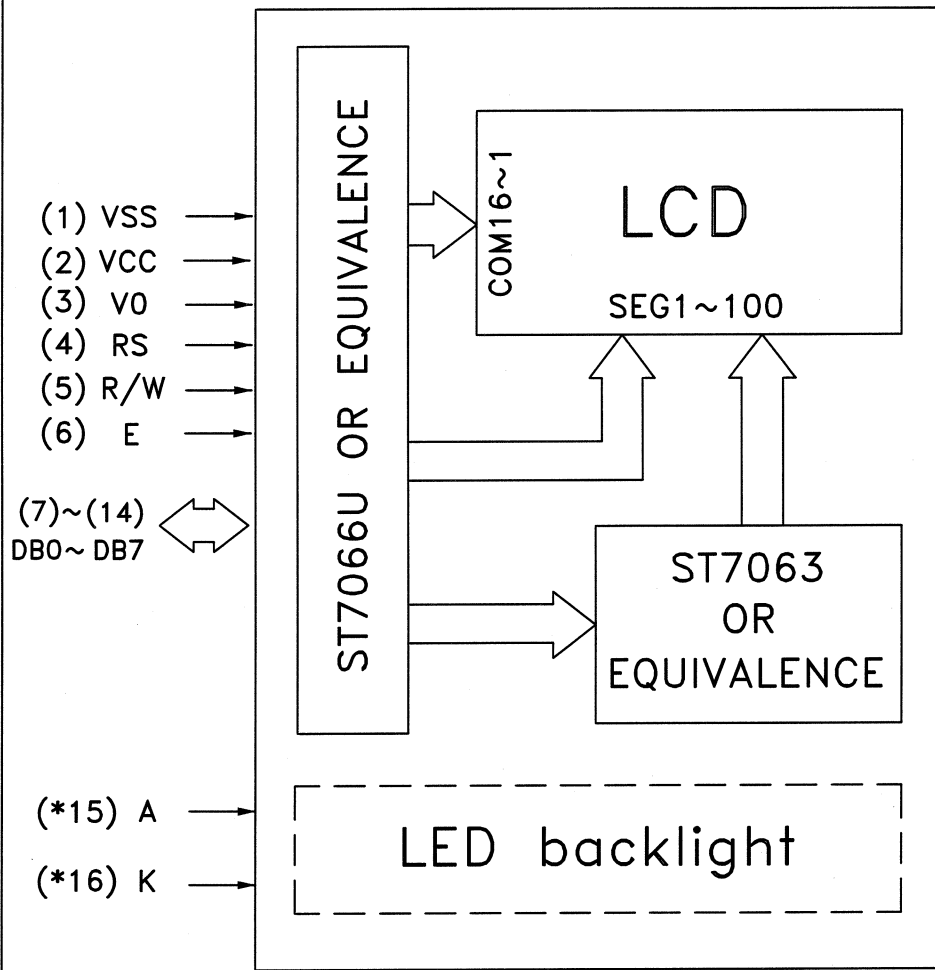
A=Pitch2.54x(8-1)=17.78

SCALE 3:1



TOLERANCE IF NOT SPECIFY ±0.5mm		SCALE NOT ON SCALE	UNIT IN mm	CLOVER CHINA DISPLAY (SHENZHEN) LTD.		SHEET 1 OF 3	
REV.	REVISION RECORD	DATE	CUSTOMER	APPROVED	MODEL NO.	ZCV4202M	
00	1st ISSUE	04 MAY 12	STANDARD		TITLE:	DIMENSION	
			AGENT	APPROVED	DRAWN BY:	DingQin DATE :07 MAY 12	
			CUSTOMER REF.	OUR REF. ZX4031X	CHECKED BY:	Allen DATE :07-05-12	
					APPROVED BY:	[Signature] DATE :7/5/12	

BLOCK DIAGRAM



PIN NUMBER	SYMBOL	FUNCTION
1	VSS	Ground(0V)
2	VCC	Power supply voltage for logic
3	V0	Input voltage for LCD drive
4	RS	Register select signal
5	R/W	Read / Write
6	E	Enable signal
7	DB0	Data bus line
8	DB1	
9	DB2	
10	DB3	
11	DB4	
12	DB5	
13	DB6	
14	DB7	
*15	A	Backlight power supply (+)
*16	K	Backlight power supply (-)

NOTE (*) : A,K Pins are used for LED backlight version


TOLERANCE IF NOT SPECIFY ±0.5mm		SCALE NOT ON SCALE	UNIT IN mm	CLOVER CHINA DISPLAY (SHENZHEN) LTD.		SHEET 2 OF 3	
REV.	REVISION RECORD	DATE	CUSTOMER		APPROVED	MODEL NO. ZCV4202M	
00	1st ISSUE	04 MAY 12	STANDARD			TITLE: PINOUT & BLOCK DIAGRAM	
			AGENT		APPROVED	DRAWN BY: DingQin DATE :07 MAY 12	
			CUSTOMER REF.		OUR REF. ZX4031X	CHECKED BY: Allen DATE :07-05-12	
						APPROVED BY: DATE : 7/5/12	

1. General specification
 - Display mode : 20 characters x 2 lines COB LCD module
 - Interface : 4-bit / 8-bit parallel
 - Driving method : 1/16 duty , 1/5 bias

2. Electrical specification
 - Supply voltage for logic (VDD) : 5.0V
 - Input voltage for LCD (V0) : 0.3V

3. Mechanical specification
 - Dot size : 0.60(L) X 0.65(W)
 - Dot pitch : 0.65(L) X 0.70(W)
 - Character size : 3.20(L) X 5.55(W)
 - Character pitch : 3.80(L) X 5.95(W)
 - Active area : 75.4(L) X 11.5(W)
 - Viewing area : 83.0(L) X 18.6(W)
 - Module dimension : 116.0(L) X 37.0(W) X 13.5MAX(H)

4. Backlight specification
 - Backlight type : Side-lited LED Backlight
 - Backlight color : White
 - Supply voltage for backlight : 5.0V

TOLERANCE IF NOT SPECIFY ±0.5mm		SCALE NOT ON SCALE	UNIT IN mm	 CLOVER CHINA DISPLAY (SHENZHEN) LTD.		SHEET 3 OF 3	
REV.	REVISION RECORD		DATE	CUSTOMER STANDARD	APPROVED	MODEL NO. ZCV4202M	
00	1st ISSUE		04 MAY 12			TITLE: SPECIFICATION	
				AGENT	APPROVED	DRAWN BY: DingQin DATE :07 MAY 12	
						CHECKED BY : <i>Allen</i> DATE : 07-05-12	
				CUSTOMER REF.	OUR REF. ZX4031X	APPROVED BY : <i>[Signature]</i> DATE : 7/5/12	