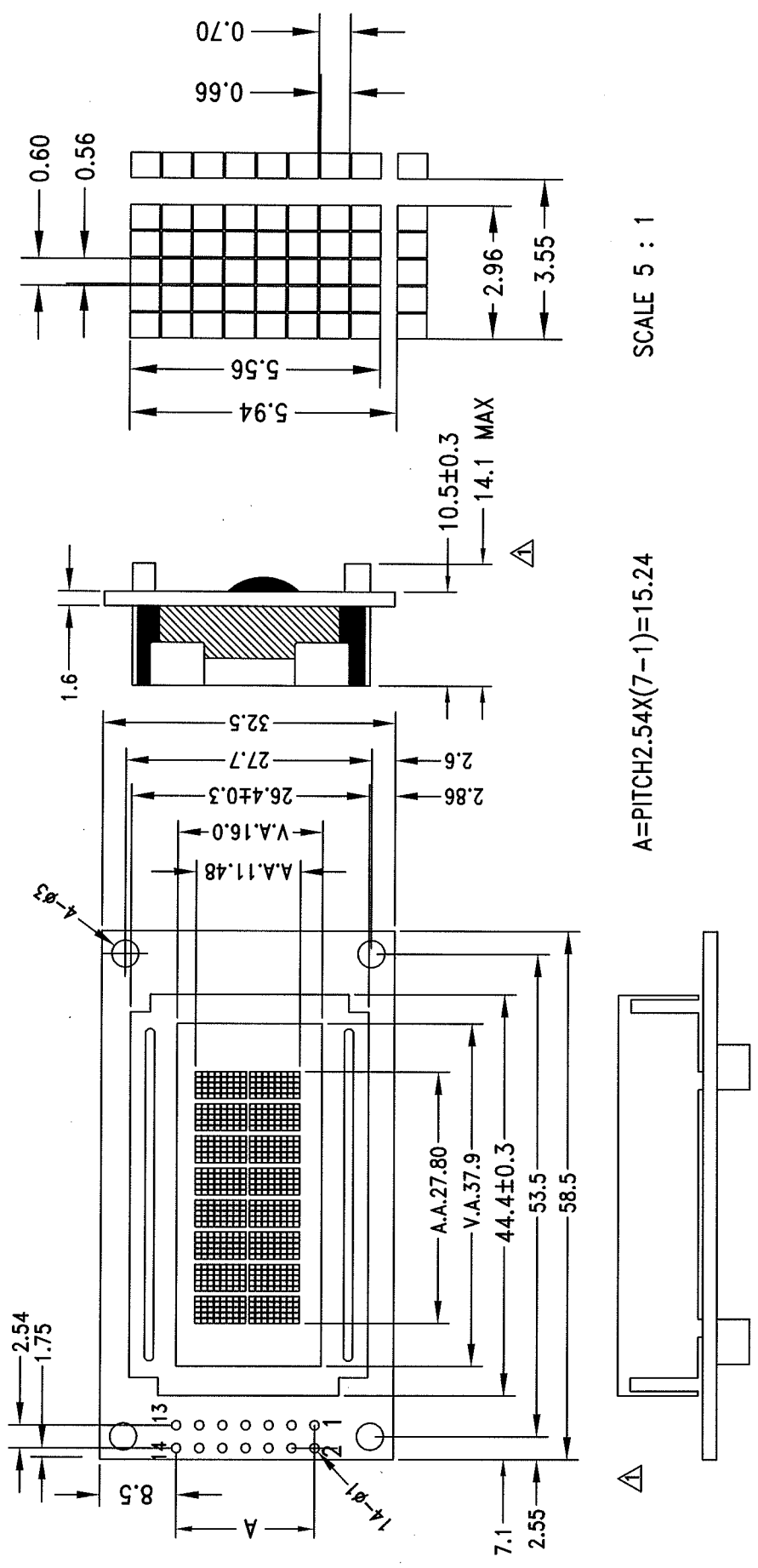


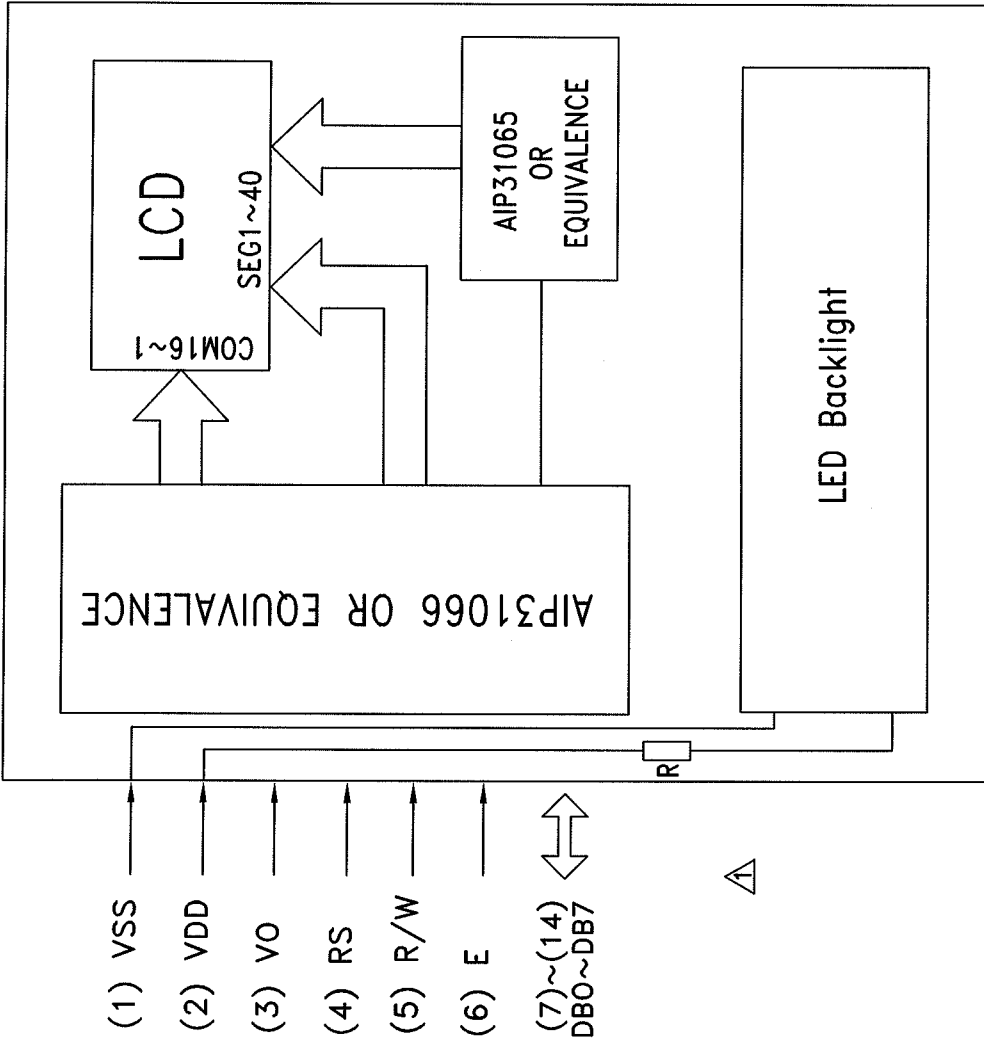
MARK	REASON	PREPARED	DATE
△	Add the backlight specification and modify the module dimension	Allen	05 JUN 12
△			
△			
△			



A=PITCH2.54X(7-1)=15.24 SCALE 5 : 1

TOLERANCE IF NOT SPECIFY ±0.5mm		SCALE NOT ON SCALE	UNIT IN mm	CLOVER CHINA DISPLAY (SHENZHEN) LTD.		SHEET 1 OF 3
REV.	REVISION RECORD	CUSTOMER	DATE	APPROVED	MODEL NO.	ZCV4082M
00	1st ISSUE	AGENT	29 MAR 12	APPROVED	TITLE:	MODULE DIMENSION
01	Add the backlight specification and modify the module dimension	CUSTOMER REF.	05 JUN 12	OUR REF.	DRAWN BY:	ZHOU.H.Y
					CHECKED BY:	Allen
					DATE:	05 JUN 12
					APPROVED BY:	Allen
					DATE:	05 JUN 12

BLOCK DIAGRAM



PIN NO.	SYMBOL	FUNCTION
1	VSS	Ground
2	VDD	Power supply for logic
3	VO	Input voltage for LCD drive
4	RS	Register select signal
5	R/W	Read / Write
6	E	Enable signal
7	DB0	Data bus line
8	DB1	
9	DB2	
10	DB3	
11	DB4	
12	DB5	
13	DB6	
14	DB7	



TOLERANCE IF NOT SPECIFY ±0.5mm		SCALE NOT ON SCALE	UNIT IN mm	CLOVER CHINA DISPLAY (SHENZHEN) LTD.		SHEET 2 OF 3
REV.	REVISION RECORD		DATE	APPROVED	MODEL NO. ZCV4082M	
00	1st ISSUE		29 MAR 12	APPROVED	TITLE: PINOUT & BLOCK DIAGRAM	
01	Add the backlight specification and modify the module dimension		05 JUN 12	APPROVED	DRAWN BY: ZHOU.H.Y	DATE: 05 JUN 12
				OUR REF.	CHECKED BY: P11	DATE: 05 JUN 12
				CUSTOMER REF.	APPROVED BY: [Signature]	DATE: [Signature]



STANDARD

CUSTOMER

AGENT

CUSTOMER REF.

1. General specification
- Display mode : 8 characters X 2 lines COB LCD module
 - Interface : 4-bit/8-bit parallel
 - Driving method : 1/16 duty , 1/5 bias
2. Electrical specification
- Supply voltage for logic(VDD) : 5.0V
 - Input voltage for LCD (V0) : 0V
3. Mechanical specification
- Dot size : 0.56 (L) X 0.66 (W)
 - Dot pitch : 0.60 (L) X 0.70 (W)
 - Character size : 2.96 (L) X 5.56 (W)
 - Character pitch : 3.55 (L) X 5.94 (W)
 - Active area : 27.8 (L) X 11.48 (W)
 - Viewing area : 37.9 (L) X 16.0 (W)
 - Module dimension : 58.5 (L) X 32.5 (W) X 14.1MAX (H) Δ
- Δ 4. Backlight specification

Backlight type	Backlight color	Supply voltage for backlight
Side-lited LED backlight	WHITE	5.0V
Array LED backlight	YELLOW GREEN	5.0V

TOLERANCE IF NOT SPECIFY ±0.5mm		SCALE NOT ON SCALE	UNIT IN mm	CLOVER CHINA DISPLAY (SHENZHEN) LTD.		SHEET 3 OF 3
REV.	REVISION RECORD			CUSTOMER	APPROVED	MODEL NO.ZCV4082M
00	1st ISSUE		DATE 29 MAR 12	STANDARD		TITLE: SPECIFICATION
01	Add the backlight specification and modify the module dimension		DATE 05 JUN 12	AGENT	APPROVED	DRAWN BY: ZHOU.H.Y DATE : 05 JUN 12
						CHECKED BY : <i>Alm</i> DATE : 05 JUN 12
				CUSTOMER REF.	OUR REF.	APPROVED BY : <i>[Signature]</i> DATE : 07/6/12